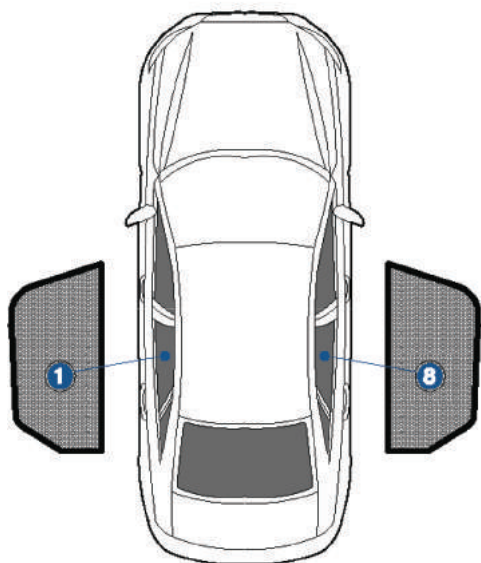


Installation Manual

AUDI A6 EST
AU-A6-E-C-18



COMPONENTS INCLUDED



SHADES



1+8

FIXING CLIPS



CL-M12 x 4



Side Shade Installation

AUDI A6 EST
AU-A6-E-C-18

COMPONENTS NEEDED:



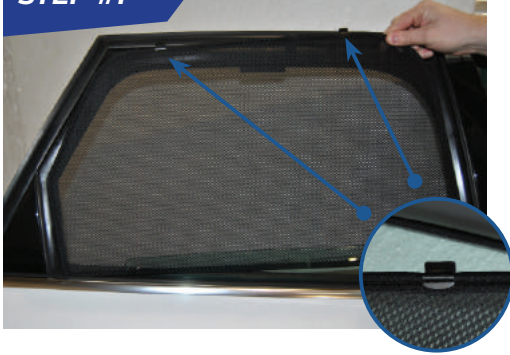
1+8



CL-M12 x 4

STEP #1

ATTACH CLIPS ON SHADE EDGES



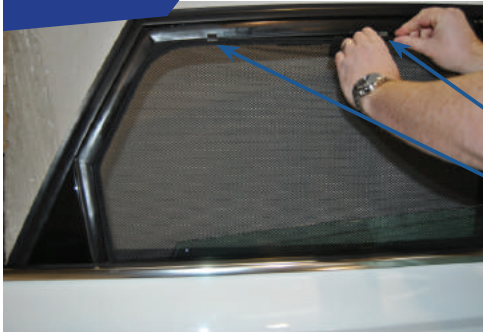
STEP #2

POSITION THE SIDE SHADE



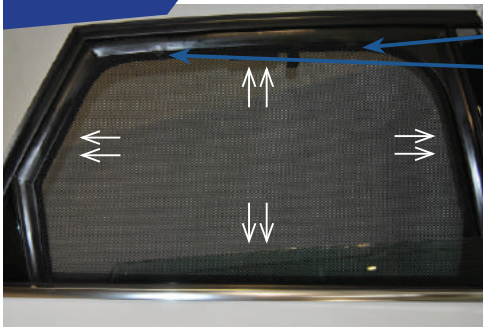
STEP #3

INSERT CLIPS INSIDE WEATHERSTRIP



STEP #4

ENSURE SECURELY FITTED IN PLACE



CAR
SHADES